



MARCH 2017

PERFORMANCE INDICATORS

We are committed to accountability and to continually improving our services through the use of data, analysis and feedback from the families we serve. As part of that commitment, we're pleased to present our Performance Indicators for 2017.

These five measurements are tools to help child welfare in Ontario strive for better outcomes for the children and families we serve.

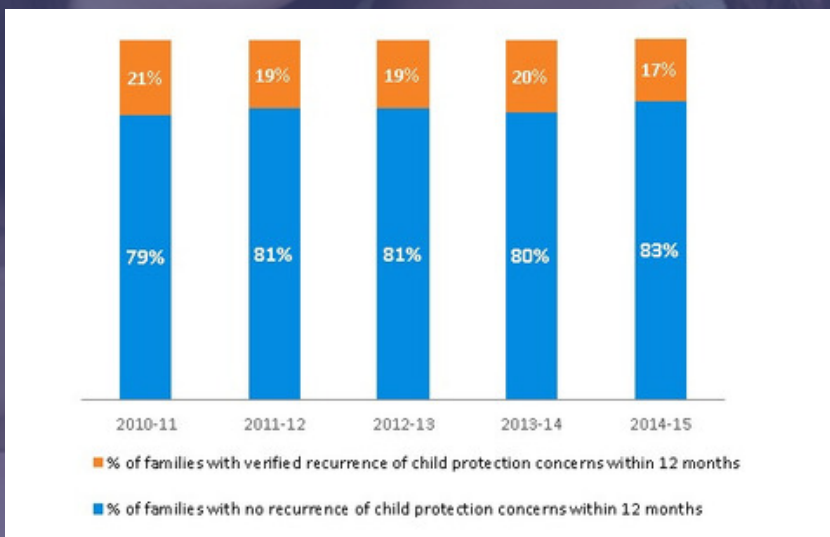
The three core areas of child welfare work are **safety, permanency and well-being** and these are reflected in the five publicly reported service performance indicators.

SAFETY OUTCOME

- REPORT SUMMARY

Recurrence of Child Protection Concerns in a Family after an Investigation

This measures the number of cases that were closed after an initial investigation but where the family subsequently needed to return to the child welfare system within 12 months after closure. Data suggests that the majority of families do not return for service within 12 months of service closure.

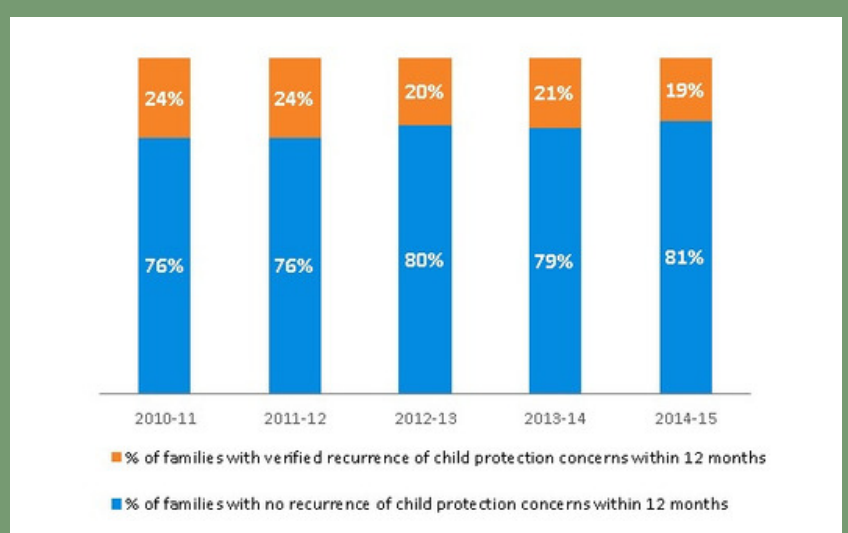


SAFETY OUTCOME

- REPORT SUMMARY

Recurrence of Child Protection Concerns in a Family after Ongoing Protection Services Were Provided

This measures the number of cases that were closed after protection issues were confirmed and services were provided and then subsequently the family needed to return to the system within 12 of closure. The majority of families do not return for service within 12 months of service closure.

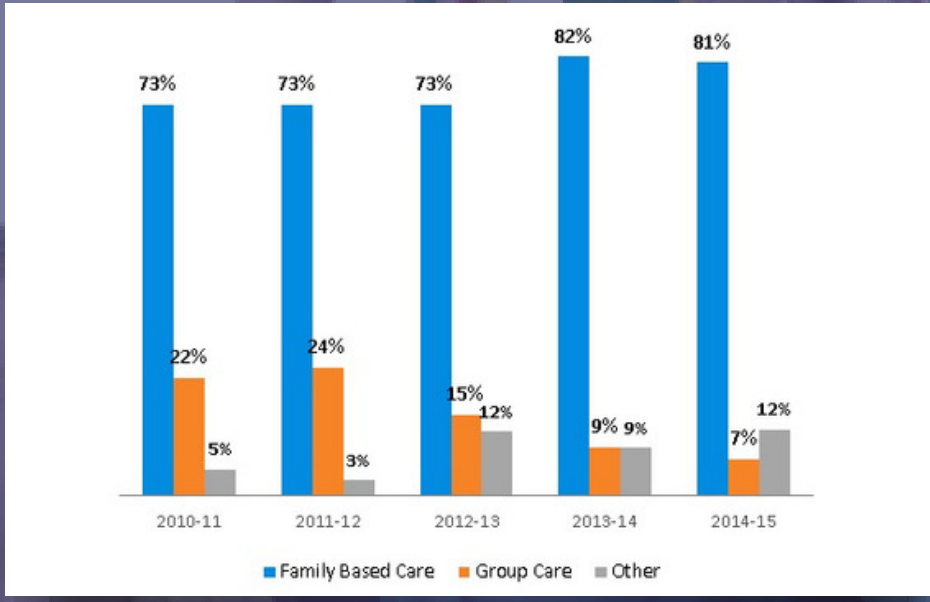


PERMANENCY

- REPORT SUMMARY

The Days of Care, by Placement Type

For all children admitted to the care of our Children's Aid Society, the days of Family-based care. The results show that the majority of care provided is family-based care.

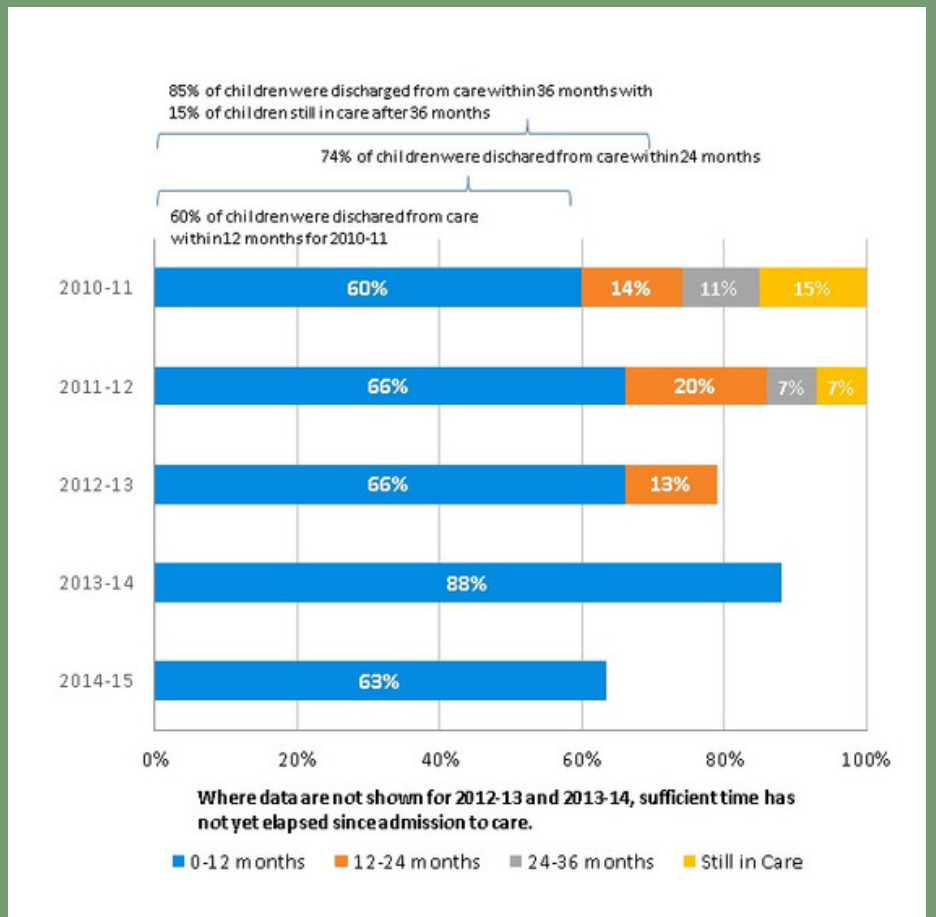


PERMANENCY

- REPORT SUMMARY

The Time to Permanency

For all children admitted to the care of our Children's Aid Society during the fiscal year, the cumulative percentage discharged within a specific time period (i.e., 12 months, 24 months and 36 months since admission). Most children are discharged from care less than a year after admission.



WELL-BEING

- REPORT SUMMARY

The Quality of the Caregiver and Youth Relationship

The average score for children in care (aged 10-15 and 16+) from a standard scale that measures a young person's perception of the quality of the relationship with his or her primary caregiver, such as a foster parent. The scale has four questions and uses a composite score with a minimum of 0, and a maximum of 9. Overall the data will show that the youth relationship with caregivers is mostly positive.

